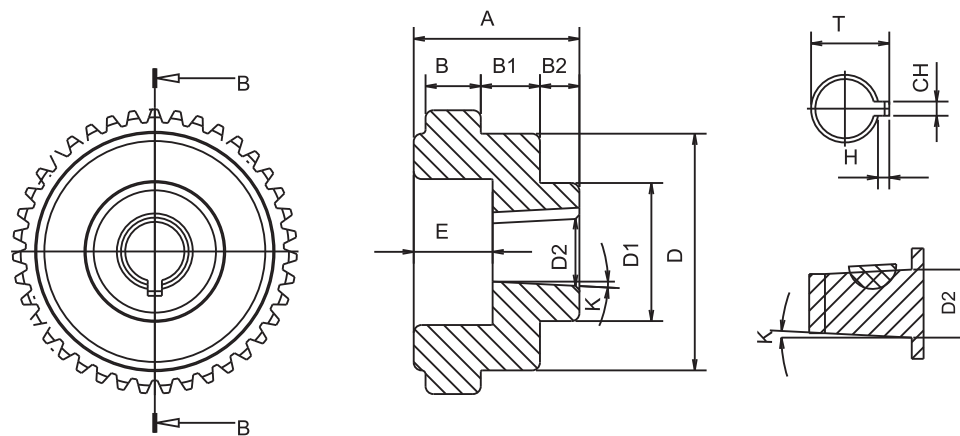


Sect. A-A

REFERENCE			MOTOR SIDE COUPLING GEAR							
KW.	HP	E.MOTOR	CODE	A	B	D	D2	CH	T	Z
18,5 / 22	25 / 30	180	DK4803	47 & 67	14	68				42
			DK481903				19	6	21	
			DK482403				24	8	28	
			DK482803				28	8	32	
			DK483203				32	8	36	
			DK483803				38	10	43	
			DK484203				42	12	47	
			DK484803				48	14	53	



Sect. B-B

PUMP SIDE COUPLING GEAR													
CODE	A	B	B1	B2	D	D1	D 2	E	CH	T	H	K	Z
DK481P03	47	14	20	9	68	35	16.66	25	4	-	2	1/8	42
DK482503			-	-		-	25	-	6	28	3	-	
DK482PD03			-	-		-	22.15	-	6.35	25.15	3	-	
DK482PK03			-	-		-	22.15	20	4	-	2	1/8	
DK483PK03			-	-		-	22.2	-	4	-	2	-	
DK483PD-1-03			-	-		-	25,4	-	6	28,40	3	-	
DK483PD-2-03			-	-		-	31,75	-	8	35,75	4	-	
DK483PD-3-03			-	-		-	32	-	8	36	4	-	
DK48-G2B-03			-	-		-	12.5	-	3	-	1,5	1/5	
DK48-1M03			-	-		-	13.9	-	3	-	1,5	1/8	
DK48-G2-1403			-	-		-	14.3	-	4	-	2		
DK48-2-03			-	-		-	17.2	-	4	-	2		
DK48-2-03T			-	-		-	17.2	-	3.2	-	1,6		
DK48-G3-03			-	-		-	18.36	-	4	-	2	1/5	
DK48-G3B-03			-	-		-	19.3	-	5	-	2,5		
DK48-SAE-A-03			-	-		-	19.05	-	5	21,55	2,5	-	
DK48-G3,5-03			-	-		-	21.08	-	5	-	2,5	1/8	
DK48-ZG-03			-	-		-	25.2	-	5	-	2,5	1/5	
DK48-35-03T			-	-		-	25.6	-	4.76	-	2,4	1/8	
DK48-35-03			-	-		-	25.6	-	5	-	2,5		
DK48-4-03T			-	-		-	33.3	-	6.35	-	3,2		
DK48-4-03			-	-		-	33.3	-	7	-	3,5		